

PWM MOTOR SPEED CONTROLLER AT-005

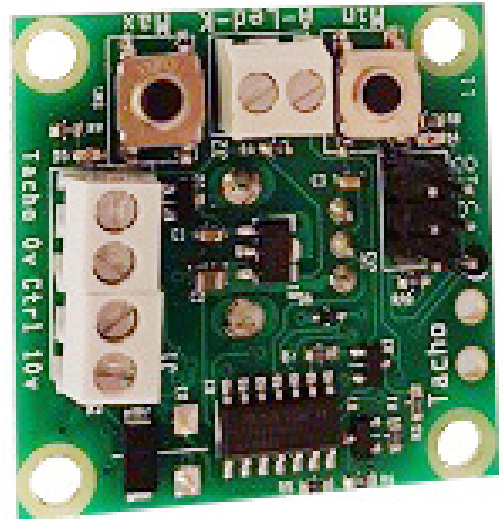
The controller is designed to work with Torin-Safin fan type MIBR190038 EC3BA090 or similar.

Unlike some controllers, adjusting the maximum setting does not change or interfere with the minimum setting and vice-versa.

The maximum and minimum fan speed are programmable using the two push buttons in conjunction with the pot. By design it is not possible to set the maximum fan speed less than the minimum fan speed or set the maximum and minimum fan speeds closer than 5%. An LED indicates the setting of the appropriate speed adjustment is enabled.

The limits can be cleared by pressing and holding both buttons until the LEDs extinguish.

The fan speed is adjustable, between the set limits, using the potentiometer which can also be used to mount the PCB to a front panel. The unit also has 4 x 3.5mm diameter fixing holes on 32x32mm centres. It is available in two versions AT-009 LED's on same side as components (back) and AT-006 LED's on the front.



SPECIFICATION:

Input voltage	8-12v
Nominal current consumption	1.6mA
Speed adjustment LED	Indicates setting adjustment
Reverse protection	Included
ESD protection	Human body model to 4Kv
Operating temperature range	-10deg C to +60deg C at a maximum of 90% non-condensing humidity
Size	36 x 36mm
Height from base of thread	24mm



Manufactured in the UK by:

BENTLEY SECURITY PROJECTS LTD

Dickinson Street, Oldham, OL4 1HD

Tel: 0161 620 6992

Fax: 0161 620 6995

sales@bentleysecurity.com